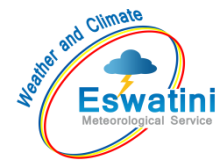


AGROMETEOROLOGICAL BULLETIN

Doc No: TEA 3/3/7/2 F-004
Revision No: 1
Effective Date: 01.07.2017
Page No: 1 of 5
Approved by:



REPORTING PERIOD:
01 – 10 NOVEMBER 2024



ISSUE No.: 04

SEASON: 2024/25

RELEASED: 14/11/2024

CONTENTS

CONTENTS	1
HIGHLIGHTS	1
RAINFALL AND TEMPERATURES	2
RAINFALL	2
TEMPERATURES	3
MAIZE AND OTHER CROPS.....	3
CURRENT FARMING ACTIVITY	3
OTHER CROPS	3
MAIZE CROP STAGE AND CONDITION ..	3
LIVESTOCK AND PASTURES	3
WATER SITUATION	4
MEDIUM-TERM OUTLOOK	4
RAINFALL	4
TEMPERATURE.....	4
SOIL MOISTURE	4
WIND SPEED	4

HIGHLIGHTS

- **Below Normal rainfall observed...**
- **Fair vegetation condition...**
- **Land preparation and planting activities...**
- **Decrease in rainfall is anticipated...**
- **Warm to hot temperatures forecasted...**
- **Decrease in soil moisture expected...**

AGROMETEOROLOGICAL BULLETIN

Doc No: TEA 3/3/7/2 F-004

Revision No: 1

Effective Date: 01.07.2017

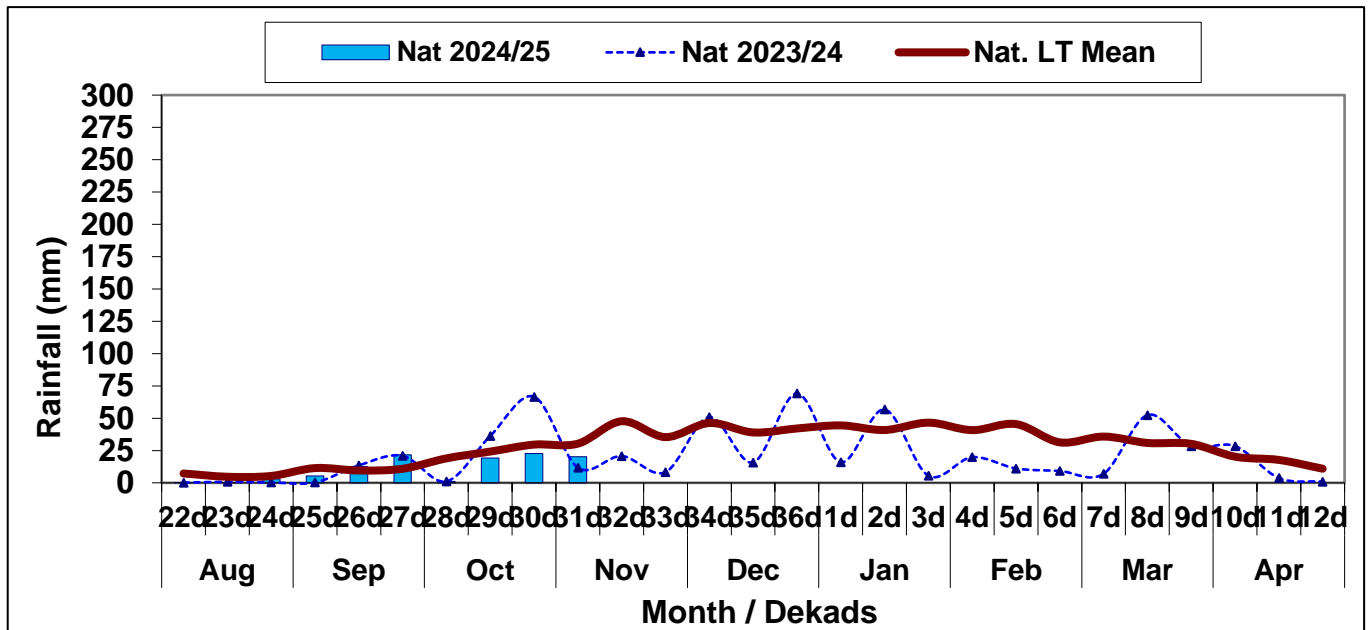
Page No: 2 of 5

Approved by:

RAINFALL AND TEMPERATURES

RAINFALL

Below Normal rainfall was observed in the 1st dekad of November 2024 (**Figure 1**), mostly in the southern parts of the country (**Map 1**).



AGROMETEOROLOGICAL BULLETIN

Doc No: TEA 3/3/7/2 F-004

Revision No: 1

Effective Date: 01.07.2017

Page No: 3 of 5

Approved by:

The Highveld and Middleveld receive Below Normal rainfall, while the Lowveld and Lubombo plateau received Normal rainfall (**Table 1**).

Table 1: Rainfall (mm) 1st dekad November 2024

	HV	MV	LV	LP
2023/24	14.2	8.2	12.5	11.5
Average	41.3	33.3	21.3	24.7
2024/25	17.5	18.7	25.7	18.9
Anomaly	-23.8	-14.5	4.4	-5.9

TEMPERATURES

High temperatures were observed during the reporting period, with a 3 days heat wave of temperatures exceeding 30°C in the Highveld and 40°C in the Lowveld (**Figure 2**).

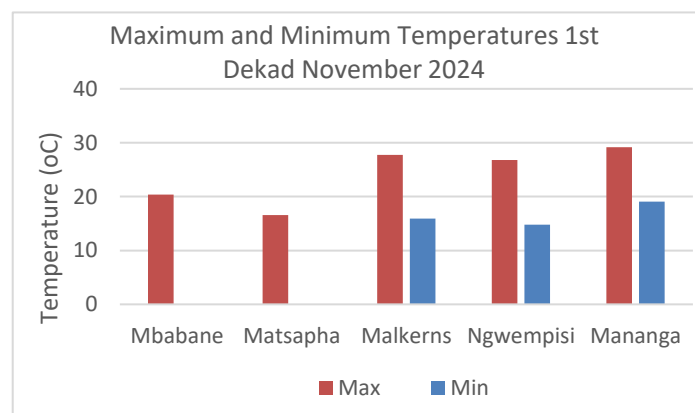


Figure 2: Maximum and Minimum temperatures 1st dekad of November 2024

MAIZE AND OTHER CROPS

CURRENT FARMING ACTIVITY

Most farmers have commenced land preparation and planting.

OTHER CROPS

No other crops have been reported to have been planted.

MAIZE CROP STAGE AND CONDITION

Farmers have planted maize, mostly in the Highveld and Middleveld and is reported to be in good condition.

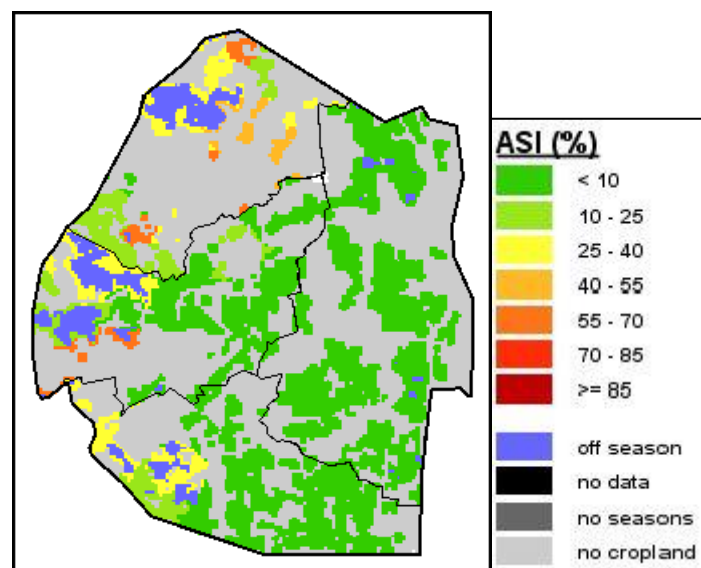


Image 1: Agriculture Stress Index 1st dekad November 2024

Source: FAO-GIEWS

LIVESTOCK AND PASTURES

Livestock is in fair to good condition as rangelands continue to improve.

Compiled and Issued by: Agrometeorological Unit,

Swaziland Meteorological Service, Ministry of Tourism and Environmental Affairs.

Box 2652, Mbabane, Swaziland. ☎ (+268) 2404 8859 / 2404 6274. 📠 Fax: 2404 1530

E-mail: dudu@swazimet.gov.sz

AGROMETEOROLOGICAL BULLETIN

Doc No: TEA 3/3/7/2 F-004

Revision No: 1

Effective Date: 01.07.2017

Page No: 4 of 5

Approved by:

WATER SITUATION

The dams in the country are showing a slightly decrease as compared to last week, only Mnjoli dam is showing a slight improvement in water storage. Lubovane, Mnjoli and Maguga dam are atleast above 70% of their storage capacities, at 79%, 74% and 72 % respectively. While Hawane dam is at 45% and Luphohlo dam at 33%.

If rains improve, the dams storage capacities are anticipated to increase. The nation is urged to continue conserving water.

Table 2: Dam storage capacity as at 11th November 2024

Name of Dam	River	Full Supply Storage Million Cubic meters	Percentage Storage (%) 11 th Nov, 2024
Mnjoli	Black Mbuluzi	177	74.54
Lubovane	Great Usuthu	155	79.06
Maguga	Komati	332	72.90
Hawane	Black Mbuluzi	2.75	45.00
Luphohlo	Lusushwana	23.6	33.20

MEDIUM-TERM OUTLOOK

RAINFALL

Decrease in rainfall is expected in the outlook period.

TEMPERATURE

Warm to hot temperatures are anticipated in the outlook period.

SOIL MOISTURE

A decrease in soil moisture is expected in the outlook period.

WIND SPEED

Wind will generally be light to moderate in the outlook period

NB: Outlook period is ten days from date of issue

Compiled and Issued by: Agrometeorological Unit,

Swaziland Meteorological Service, Ministry of Tourism and Environmental Affairs.

Box 2652, Mbabane, Swaziland.  (+268) 2404 8859 / 2404 6274. Fax: 2404 1530

E-mail: dudu@swazimet.gov.sz

AGROMETEOROLOGICAL BULLETIN

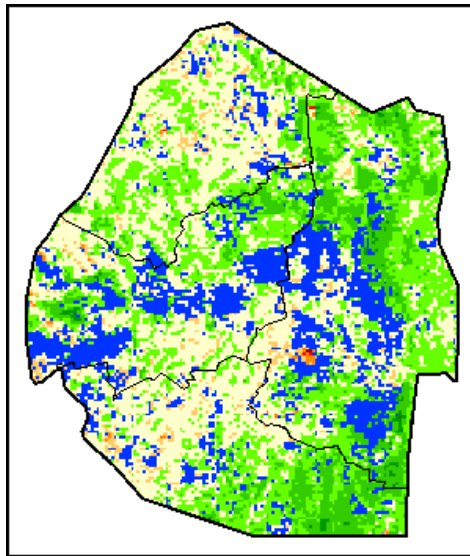
Doc No: TEA 3/3/7/2 F-004

Revision No: 1

Effective Date: 01.07.2017

Page No: 5 of 5

Approved by:



Legend

Difference to LTA

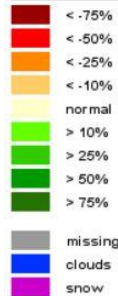
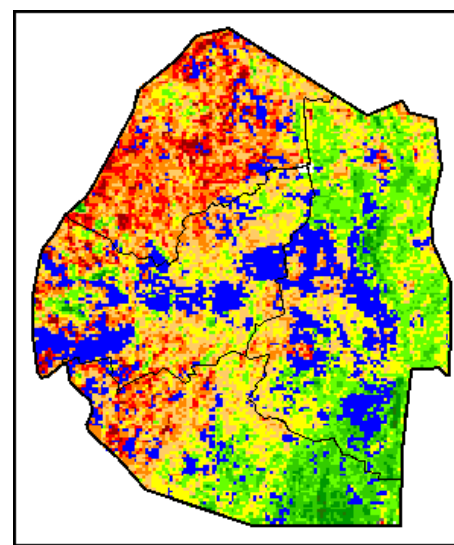


Image 2: Normalized Difference Vegetation Index (NDVI) Anomaly (1st Dekad November 2024)
Source: FAO-GIEWS



Legend

VHI

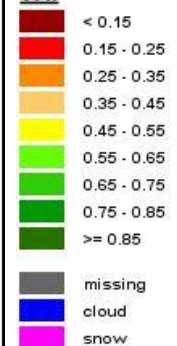


Image 3: Vegetation Health Index (VHI) (1st Dekad November 2024)
Source: FAO-GIEWS

Compiled and Issued by: Agrometeorological Unit,

Swaziland Meteorological Service, Ministry of Tourism and Environmental Affairs.

Box 2652, Mbabane, Swaziland. ☎ (+268) 2404 8859 / 2404 6274. Fax: 2404 1530

E-mail: dudu@swazimet.gov.sz